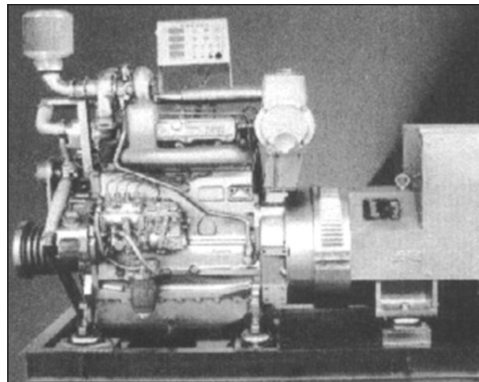


SERVICE IS OUR PROPULSION/EL SERVICIO ES NUESTRA PROPULSION

**Marine Generators Serie MO D/TD226B
Generadores Marinos Serie MO D/TD226B**

The benefits/Las ventajas:

- Very low fuel consumption
• *Bajo consumo de gasoil*
- Low maintenance and user friendly technique equipment
• *Tecnología de mantenimiento y uso facil de manejar*
- Low installation cost
• *Costes reducidos de instalación*
- **Customized installation solutions are possible**
• **Soluciones de otras potencias para clientes disponible**



based on/
base
**Generators with dual-circulation water cooling and control panel/
Generador con Refrigeración indirecta y Panel control**

Technical details/Datos tecnicos:

| Model/Modelo | CCFJ24J | CCFJ30J | CCFJ40J | CCFJ50J | CCFJ64J | CCFJ80J |
|---|-------------------|------------|------------|------------|------------|------------|
| Numbers of cylinders/Número de cilindros: | 3 | 3 | 4 | 4 | 6 | 6 |
| Engine model/Tipo motor: | D226B-3CD | TD226B-3CD | TD226B-4CD | TD226B-4CD | TD226B-6CD | TD226B-6CD |
| Voltage/Voltaje: | V 230/400 | 230/400 | 230/400 | 230/400 | 230/400 | 230/400 |
| Frequency/Frecuencia: | Hz 50 | 50 | 50 | 50 | 50 | 50 |
| Rated output/Potencia: | kW*/kVA 24/30 | 30/37,5 | 40/50 | 50/62,5 | 64/80 | 80/100 |
| Generator/Generador: | Stamford BCI.184G | BCI184H | UC.224D | UC.224E | UC224G | UC.274C |

* 1 kW = 1,36 CV

**Generators in open and Super-Silence Version/
Generadores en Versiones abierto y Super Silencioso**

Information subject to change without advice. (January 2005)
Valores indicados solo informativos, posibles cambios sin avisar, 01/05